

Whatever your future holds ...

*Know you can.*





# Know God.

## Catholic Foundation – We are a faith filled community creating a better future.

---

**St Peter Claver College perpetuates the values of Saint Peter Claver (1580 – 1654), a Jesuit priest and missionary.**

St Peter Claver worked with the slaves in Columbia, South America for freedom and the humane treatment of all people, against oppressive challenges and ultimately for the growth of mutual respect and love.

Due to his life's work he became the Patron Saint of Slaves and in 1896 Pope Leo declared Saint Peter Claver the Patron Saint of African Missions. He is also the Patron Saint of Seafarers. His life was dedicated to God, promoting liberty and defending human rights. He showed us an example of concern for the human

condition, heroic love and acts of justice. These values are evident at St Peter Claver College today.

St Peter Claver College was founded in 1976; at that time the College became a Catholic secondary pathway option for primary students from Sacred Heart School, Booval. The presence of the Sisters of Mercy was an important influence in the College in its early years. Today St Peter Claver College is a member of Marist Schools Australia and has a current enrolment of approximately 1100 students.

The Marist, Mercy and Jesuit influences combine to form this remarkable Catholic College which lives the motto of *Concern, Love and Justice*.





# Concern *Love* Justice.

## The St Peter Claver College Motto

---

**St Peter Claver College is a welcoming and inclusive community founded on the values of *Concern, Love and Justice*. Acceptance of everyone and their individual differences is a priority in developing good relationships.**

The College draws from over 40 different primary feeder schools, resulting in an incredibly diverse and culturally rich school population.

The leadership team at St Peter Claver College believe in developing strong relationships with parents/caregivers, students and the wider community. New families are warmly welcomed and encouraged to participate in all activities, helping to ensure their students settle into the Claver College community with ease.

The College has a strong connection with the local Aboriginal and Torres Strait Islander people and acknowledges that St Peter Claver College is built on the traditional lands of the Jagera, Yuggera and Ugarapul people.

### MISSION

---

St Peter Claver College is a Catholic community which embraces all students in the Gospel values of *Concern, Love and Justice*. It is a place where all students are known. We take inspiration from Jesus' teachings, the work of St Peter Claver and St Marcellin Champagnat.

Our community fosters a holistic learning environment which celebrates the uniqueness of each individual, strives for excellence and lives the values *Concern, Love and Justice*.

**St Peter Claver is a  
Catholic Co-educational  
Secondary College  
offering an affordable,  
high quality education  
for students in  
Years 7 – 12.**



It's the strong sense of  
community that sets  
St Peter Claver College  
apart from other schools.

# Know you're welcome.

## Mr Bruce McPhee - Principal

**At St Peter Claver College, we believe that every student is unique, and we celebrate this diversity by offering contemporary learning experiences and subject offerings that appeal to a wide range of interests and abilities.**

We understand that today's learners are heading into a future that is constantly evolving, and we are committed to equipping our students with the skills they need to succeed in jobs and careers that do not yet exist.

Our teachers are dedicated to getting to know each student as an individual and supporting them in achieving their fullest potential. We are proud of our track record of academic success, as evidenced by our continual growth in NAPLAN results from Year 7 through to Year 9, and the growing

number of ATAR-eligible students achieving above 90 each year. Local employers also recognise the quality of education our students receive, regularly recruiting St Peter Claver College students for traineeships and apprenticeships.

We believe that a student's educational experience goes beyond the classroom, which is why we offer a comprehensive co-curricular program that includes cultural, sporting, academic and social justice activities. These programs not only enhance our academic curriculum but also provide opportunities for students to develop essential skills such as grit, resilience, emotional intelligence, respect and gratitude.

Our Pastoral Care structure is designed to strike a balance between age-based developmental Pastoral Care within Year Levels and the need for adolescents to feel a sense of belonging through

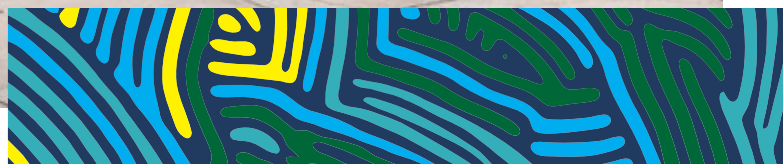
smaller, Year Level-based House-groups within the larger school. Our Pastoral Leaders work with families, teachers and students to create a supportive community that fosters personal growth and academic success.

At St Peter Claver College we are more than just a school; we are a faith community focused on Concern, Love and Justice. We work in partnership with families to produce young people who will become future leaders, proud of what they have achieved and will continue to achieve in their adult lives.

We invite you to become a part of our friendly and welcoming community here at St Peter Claver College. Let us help you unlock your capabilities and prepare you for a future full of opportunities.

**Bruce McPhee**  
**Principal**













# Know you want to.

## Middle Years – Years 7, 8 and 9

---

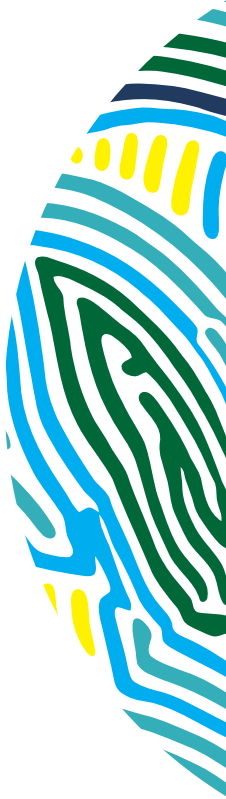
**Student motivation and engagement in the Middle Years is positively influenced through proactively tailoring approaches in learning and teaching environments.**

The Middle Years plays a critical role in developing foundational skills in literacy, numeracy, critical and creative thinking, teamwork and collaboration, as well as information and communication technology.

Traditionally, student disengagement, alienation and boredom peak in Middle Years. This can have a negative impact on the learning ability of young adolescents, their ability to manage emotional, social and moral challenges and can lead to a decline in achievement.

In response, St Peter Claver College has proactively developed a curriculum tailored to meet the needs of young adolescents. This curriculum, delivered by high quality, energetic and motivated teaching staff, is designed to move each learner forward from their current level by connecting with students' interests and learning needs. Personal and social capabilities are positively challenged through supportive relationships matched with consistently high expectations.

St Peter Claver College provides accelerated programs in Middle Years Mathematics, English, Science and Humanities, allowing students to access extension programs designed to empower students to work faster and harder and at curriculum year levels above their peers.



# Know you're ready.

## Senior Years – Years 10, 11 and 12

---

**Our Senior Years Program is designed to prepare and motivate students for success in the real world.**

St Peter Claver College offers an impressive combination of academic, vocational, technological, cultural, artistic, sporting and leadership pathways designed to motivate and prepare students for future success. For all students, this will involve some level of future education, either at university, training institutes or on-the-job training.

St Peter Claver College has a proven track record of successfully individualising our learning programs to cater for elite academic students striving for a high ATAR, to those looking for industry experience via School-based Apprenticeships in Senior schooling. Genuine personalisation and individualisation of learning programs is part of the St Peter Claver College difference.

Students work with highly engaged course mentors for subject selection and to regularly review their chosen path. Guidance in career choices is provided for all Senior Years students and spans numerous learning pathways, including university, college and vocational options as well as providing work experience and extensive traineeship/apprenticeship opportunities.


St Peter Claver College offers a range of vocational qualifications across a number of training package areas. These qualifications are nationally recognised and provide pathways for students who wish to consider a work pathway or those who wish to study further at university or TAFE. Vocational pathways are well supported through the College Careers Office assisting students to find School-based Apprenticeships and Traineeships.









A photograph of a man in a blue suit and purple tie standing outdoors under a large tree, talking to a group of students in school uniforms. The scene is bright and sunny, with green leaves visible in the background.

Our staff are committed  
to the total development  
of each young person.



# We know you can.

## Passionate, Supportive Teaching Staff

**Students are supported by a hardworking and highly motivated team of high-quality teaching staff.**

St Peter Claver College teaching staff are students at heart, they are the high achievers, the go getters, the ones that genuinely want to spend the time getting to know each student and going the extra mile to ensure they reach their full potential.

Our staff are committed to the total development of each young person within a framework of care and love. They are passionate, supportive and maintain high expectations, challenging our students to do their best in all things.

St Peter Claver College teaching staff help our students to discover the spark within them. They nurture this spark thorough support and dedication to each student, driving them to achieve their best.





# Know you belong.

## School Culture

---

**At St Peter Claver College we teach the values that last a lifetime such as faith, kindness, honesty and compassion. This happens in a context that celebrates the arts and culture, fosters spiritual, academic and personal growth and invites students to participate in creating a world they wish to live in.**

Research tells us that the single most effective protective factor for young people is feeling a sense of belonging. At St Peter Claver College we offer students multiple ways to belong.

The traditions of hospitality, welcome and inclusion were laid down very early in this community as many Vietnamese families seeking safety in Australia were welcomed at St Peter Claver College during the late 1970s and early 1980s. Currently some 27 different cultures are represented at St Peter Claver College. This is something we embrace and celebrate. We are privileged to enjoy a harmonious relationship between students from all cultural backgrounds. To support this, our College has a number of staff dedicated to promoting culture and identity.

Intercultural understanding is developed through the curriculum and through inclusion of culturally rich experiences. The College provides a broad range of art, cultural and sporting opportunities. Cultural Dance is offered and incorporated as an important aspect of College life. The mission of the College provides a framework for social justice, service and outreach experiences.

We are committed to helping students discover their spark, discover their strengths and discover their spirit.













# Sporting Activities

---

**St Peter Claver College has a proud and rich history of co-curricular sport, offering a wide variety of activities for every student.**

From inter-house competitions including Swimming, Cross Country and Athletics Carnivals, to our local inter-school competition – Combined Ipswich Secondary Schools Sporting Association (CISSSA) – with premiership winning schools, then moving into the Metropolitan District Competition. We also cater to elite sport specific competitions and carnivals.

Our Sport Program, in conjunction with our experienced coaching staff play an integral role in assisting athletes to represent the College at District, Regional, State and National levels.

## RUGBY LEAGUE

---

- Queensland Independent Secondary Schools Rugby League (QISSRL) Confraternity Carnival
- Broncos Schoolboys Challenge:
  - Opens
  - 9/10
  - 7/8
- Ipswich School Girls Challenge
- Karen Murphy Cup
- CISSSA
- Metropolitan District Competition

## NETBALL

---

- Queensland Independent Secondary Schools Netball (QISSN) Carnival
- Vicki Wilson Cup and Shield
- Queensland Catholic Schools Cup
- CISSSA
- Metropolitan District Competition

## BASKETBALL

---

- Champion Basketball Schools Queensland:
  - Open
  - Junior Secondary
- CISSSA
- Metropolitan District Competition

## FUTSAL

---

- Australian Futsal Association Titles:
  - SEQ School Titles
  - QLD Champion of Champions
  - Australian Champion of Champions
- Chantelle Cramb Cup
- Coomera Cup
- CISSSA

## FOOTBALL

---

- uhlSport Cup
- Queensland Independent Secondary Schools Football Association Cup (ISSA)
- CISSSA
- Metropolitan District Competition

## TOUCH FOOTBALL

---

- CISSSA
- Metropolitan District Competition







# Know you're supported.

## Our Facilities

---

### **The quality of the College facilities gives our students equal access to opportunities.**

St Peter Claver College is surrounded by a 14-hectare preserved natural bushland environment offering plenty of space for modern facilities and growth.

The College has a Master Plan for continued upgrading of our facilities. In recent years we have constructed a modern Visual Art facility, a Trade Training Centre for Construction and Engineering, a high tech Learning Commons to support E-Learning, a state of the art Industrial Design and Technology Precinct, and a Performing Arts Precinct. The College has also extended and enclosed our Multipurpose Centre to create an impressive weatherproof facility for a wide range of school activities such as assemblies, award evenings, graduations and sport. Next to be delivered within the Master Plan is the new pick-up/drop-off area.

### **St Peter Claver College facilities include:**

- Learning Commons and Seminar Rooms.
- Vā Pasifika (Multipurpose Centre).
- New Performing Arts Precinct for Dance, Drama and Music.
- Film and Media Labs.
- Six Science Labs.
- Food and Textile Design Block.
- Vocational and Careers Office.
- Industry Standard Hospitality Kitchen and Restaurant.
- Inclusive Education Specialty Rooms.
- Middle Years Precinct.
- Claver Clinic – Health Care Training Room.
- Sports Oval.
- Netball, Basketball, Volleyball and Futsal Courts.
- Trade Training Centre.
- Industrial Design and Technology Building.
- Gym.
- Visual Arts Centre.









# Know your passion.

## Co-Curricular Arts and Activities

---

**The wide range of rich and vibrant co-curricular programs helps students uncover their true passion.**

St Peter Claver College provides extensive opportunities for students in both curricular and co-curricular programs.

These programs include:

- Chess Club.
- Choir.
- Claver Creators – for creative writers, filmmakers, photographers, animators and others.
- College Play or Musical.
- Competitive Dance Ensembles.
- Cultural Dance Groups – Aboriginal and Torres Strait Islander, African and Pasifika groups.
- Debating.
- Drama Club.
- eSports.
- Instrumental Music – Concert, Guitar, Percussion and String ensembles; private instrumental music tuition.
- Performance competitions such as Theatresports, QLD Youth Shakespeare Festival, Australian Theatre for Young People Intersection Festival and others.
- STEM groups and competitions.
- Tabletop Gaming, Role-playing and Interactive Simulations.
- Visual Arts Club.

### DANCE

---

St Peter Claver College has one of the most successful secondary school Dance programs in Queensland. The Claver Dance Program offers students the opportunity to develop self-confidence, physical fitness, organisational skills, goal setting, perseverance, responsibility and leadership for their life-long learning journeys. Dancers can work with a number of professional choreographers and develop their dancing to their full potential.





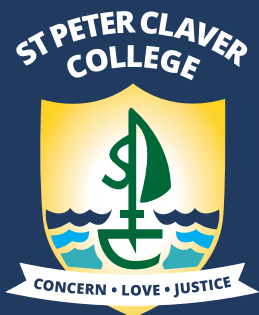
## Whatever your future holds ...

St Peter Claver College caters for and supports all students with vastly different post-schooling pathways.

We have a proven track record of successfully individualising our learning programs to cater for elite academic students chasing a high ATAR all the way across to those looking for industry experience via School-based Apprenticeships in Senior schooling.

***We know you can.***  
Here's how you can find out more ...

 [www.spcc.qld.edu.au](http://www.spcc.qld.edu.au)



10 Old Ipswich Rd  
Riverview Q 4303

PO Box 130  
Booval Q 4304

(07) 3810 5900  
[www.spcc.qld.edu.au](http://www.spcc.qld.edu.au)

Enrol here 

